

Te Whau Pathway

Project Information



Te Whau Pathway is the proposed creation of a 13km walkway and shared path that will link the Manukau Harbour at Green Bay Beach to the Waitematā Harbour at Te Atatū Peninsula along the western edge of the Whau River.

The coastal walkway will link 33 individual reserves, esplanade strips, sports parks and roads along the western banks of the Whau River. The walkway will be located on reserve land and in the marine environment through the use of boardwalks.

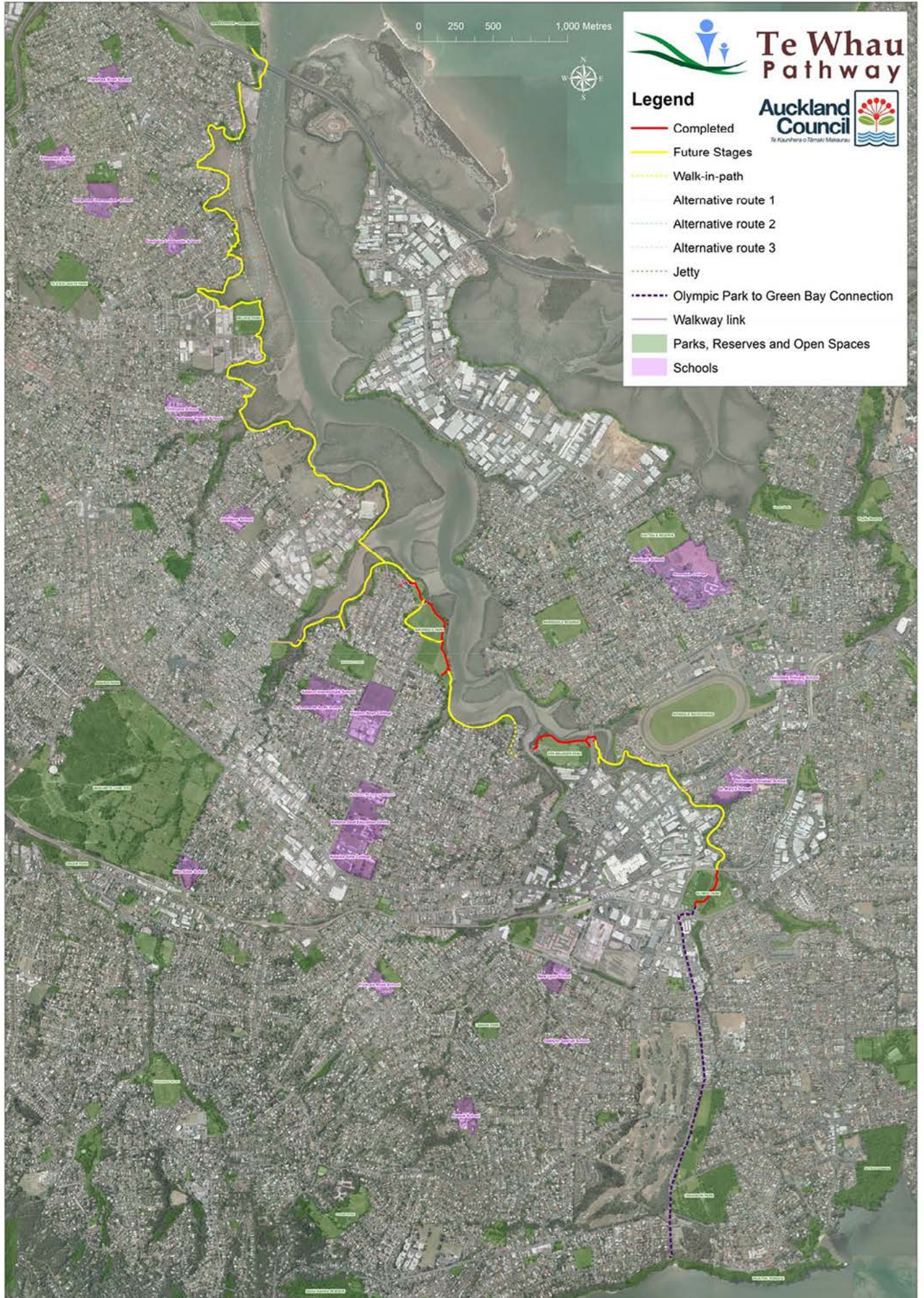
Design Features

- 3m wide shared path with timber boardwalks, concrete paths and bridged timber sections.
- Maximise the Whau River experience with boardwalk sections mainly in the coastal area
- Improve the natural environment and cleanup of the water edge and water quality
- Provide spaces for education, break out areas and learning opportunities
- Incorporate sustainable design and environmental accountability
- Recognise the many layers of Maori and Pakeha history and heritage of the area
- Include art and interpretation panels to tell our stories
- Cater for walkers and cyclists
- Be accessible for all abilities on an easy grade
- Engage with community and volunteers in the development and restoration works
- Where possible provide bridges to allow access up estuaries for small boats
- Provide entry and exit points for kayaks
- Weed removal and restoration to open up view shafts.

The indicative walkway route can be seen on the map overleaf.

Find out more: phone 3010101 or email towhaupathway@aucklandcouncil.govt.nz






Te Whau Pathway

Auckland Council
Te Kaitiaki o Tāmaki Makaurau

Legend

- Completed
- Future Stages
- - - Walk-in-path
- - - Alternative route 1
- - - Alternative route 2
- - - Alternative route 3
- - - Jetty
- - - Olympic Park to Green Bay Connection
- Walkway link
- Parks, Reserves and Open Spaces
- Schools

Funding

Funding for the project will be secured through a partnership between Auckland Council, the Whau and Henderson-Massey Local Boards, Auckland Transport and an independent trust – The Whau Coastal Walkway Environmental Trust.

The project will be staged over 5 - 8 years, dependent on funding for the physical works. The Whau Local Board has funded the design, consultation, resource consenting and project management for the first stage. The Whau Coastal Walkway Environmental Trust has funded construction of the first stage.

Stage 1

The first stage involved constructing three concrete sections of the walkway (total 1.6km) on reserve land at Olympic Park, Ken Maunder Park and Archibald Park. Construction of these sections was completed in September 2015.

Stage 1A

This stage involves constructing the main pathway at McLeod Park and new path linkages creating connections to the main pathway. These connections at Archibald Park, Ken Maunder and Olympic Park will be completed in late 2016.

Next stages

Planning is now underway on a scheme design for the boardwalk sections of the pathway to be built in the coastal marine environment. Public consultation on the design of the pathway will take place in the second half of 2016.

Planning and consultation is underway on a pontoon at Archibald Park. Discussions will be held with local waka ama clubs and other river users to ensure the pontoon is fit for purpose. If feasible, the pontoon will be built once funding has been secured.

More on-land sections of the pathway are in the planning stages, and will be built following consultation and consent. These paths in parks will connect to the coastal boardwalk sections of the pathway in the future. The map overleaf shows the stages planned for the first four years.

Artist's impression below of typical proposed walkway



TE WHAU PATHWAY PROJECT

THE FIRST FOUR YEARS

Indicative Layout Only



 **Te Whau Pathway**

Legend

- Completed
- Future Stages
- Walk-in-path
- Park Extent
- Existing hard surface

 **Auckland Council**